

Elsewhere, in and near the bogs, *Dorocordulia lepida*, *Nannothemis bella*, *Cclithemis elisa* and *martha*, *Libellula deplanata* and *semifasciata*, *Sympetrum vicinum*, *Leucorrhinia intacta*, *Nehalennia gracilis*, *Enallagma pictum*, *Ischnura posita* and *verticalis*, and *Anomalagrion hastatum* were captured or observed. *Gomphus exilis*, *Agrion maculatum*, and *Argia violacea* were found along nearby cedar-stained streams.

WYOLA, Newtown Twp., Delaware Cy., Penna. 26 Apr., 17, 22, 25, 29 May, 6 June.

Dragonflies were collected in four or five acres of woodland about two miles north of Newtown Square, Penna. There were many fallen beech and oak trees in clearings in the woods and about them, in sunlit spots, *Gomphus lividus*, *Lanthus parvulus*, *Basiaeschna janata*, *Cordulegaster diastatops*, *Didymops transversa*, and *Libellula semifasciata* were found. A very small stream, fed by springs farther up in the woods, was the only aquatic habitat in the collecting area.

(To be continued)

A New Phyllophaga from Alabama and Georgia (Scarabaeidae: Coleoptera)

By O. L. CARTWRIGHT,* Clemson, South Carolina

It is a pleasure to name the following new species of Phyllophaga after Prof. T. H. Hubbell of the University of Florida who has collected this and so many other fine Coleoptera in the southern states.

Phyllophaga hubbelli n. sp.

Holotype male.—Length 12.4 mm., width 5.3 mm. Elongate, subcylindrical, parallel, shining, glabrous, castaneus, the head darker and pronotum slightly darker than elytra. Antennae 8-jointed, club subequal to stem. Clypeus deeply emarginate, sides arcuate, margin widely reflexed, suture impressed, angulate, surface with moderately coarse strong punctures separated

* Technical Contribution No. 125 from the South Carolina Agricultural Experiment Station, Clemson, S. C.

by their diameters or less. Head two-thirds as wide as pronotum, similarly punctate, a few punctures densely crowded at angle of suture, others less closely placed each side of these, occiput with a medial smooth area and finer punctures each side. Pronotum not quite three-fifths as long as wide, one-third as long as elytra, evenly convex except for a shallow fovea each side two-thirds the distance from median line and anterior margin, sides weakly subangulate at middle, convergent in apical half, slightly less than parallel to base, margins sparsely weakly crenate fimbriate, anterior angles distinct, posterior sharply right-angled, punctures slightly coarser than on head, separated by one to three times their diameters, the median line impunctate. Elytra parallel, about two-thirds as wide as long; sutural costae strong, discal costae weak but distinct; punctuation slightly finer and closer than on pronotum. Mesosternum evenly finely hairy punctate. Abdomen glabrous, very finely sparsely punctate, flattened longitudinally, penultimate segment with a small posterior median triangular depression, the low surrounding swelling finely granulate, terminal segment with a wide smooth transverse anterior ridge interrupted medially, finely closely granulate posteriorly at middle. Pygidium evenly convex, sparsely shallowly coarsely punctate. Both posterior tibial spurs apparently movable, acute, short, the shorter barely twice as long as wide and about one-fourth the length of the longer, the latter narrow and acuminate. Tooth of claw strong, two-thirds distance from apex. Aedeagus, Fig. 1.

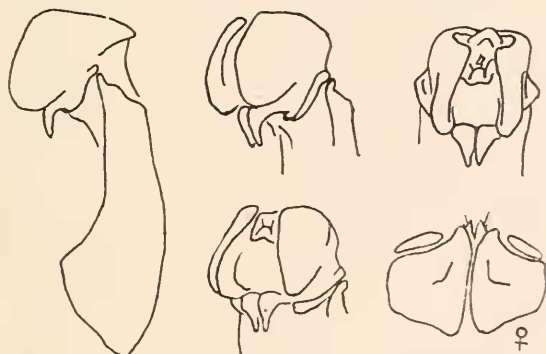


FIG. 1. *Phyllophaga hubbelli* Cartwright
Four views of male aedeagus; one of female genitalia

Allotype female.—Length 12 mm., width 5.6 mm. Club of antennae equaling funicle in length, joints 3, 4, and 5 apparently fused, abdomen evenly convex, posterior half of penultimate and terminal segments finely setigerously punctate, pygidium less convex and more sharply rounded apically, both spurs of hind tibiae thin, slightly curved obtuse, otherwise similar to male.

Holotype and one male *paratype* collected 1.5 miles south of Oxford, Calhoun County, ALABAMA, July 18, 1938, Hubbell and Freauf. *Allotype* female taken on hickory, Summerville, GEORGIA, August 4, 1937, P. W. Fattig. *Paratype* female taken on red oak, Summerville, GEORGIA, August 4, 1937, P. W. Fattig.

Holotype deposited in Museum of Zoology, University of Michigan, paratype male in author's collection, allotype and female paratype in M. W. Sanderson collection.

Phyllophaga hubbelli though not so pallid a species, is allied to *P. longitarsis* (Say) through somewhat similar genitalia and other characters. The very short spur is not longer than adjoining spicules of the terminal fringe.

Ichneumonidae Notes ¹

By WILLIAM F. RAPP, JR.

Recently while reading Dr. Henry Townes' New Catalogue of Nearctic Ichneumonidae ² I found that I had notes on two items which Doctor Townes was unable to locate. On page 424 of Volume 1, he lists the type of *Conocalama occidentalis bolteri* (Cresson) (*Trogus bolteri*) as being in the Andrew Bolter Collection and states that the Bolter Collection is missing. This collection is at the Department of Entomology, University of Illinois, Urbana. The type specimen was found in a drawer containing the other Ichneumonidae, and has been removed to a special drawer for type material. The specimen is in excellent condition.

¹ Contribution from the Department of Entomology, University of Illinois, Urbana, No. 253.

² Memoirs of the American Entomological Society 11.